

Chambers Valley

Background

Chambers Valley is a 139.31-acre tract of land located in Chambers County, Alabama. Previously this site has been used for hunting and recreational uses.

Features

Chamber Valley has a variety of creeks that cross the site and border the site. There is an approximately 130-foot elevation change across the site on multiple slopes. The site features both ample wooded land with a dirt track for access.

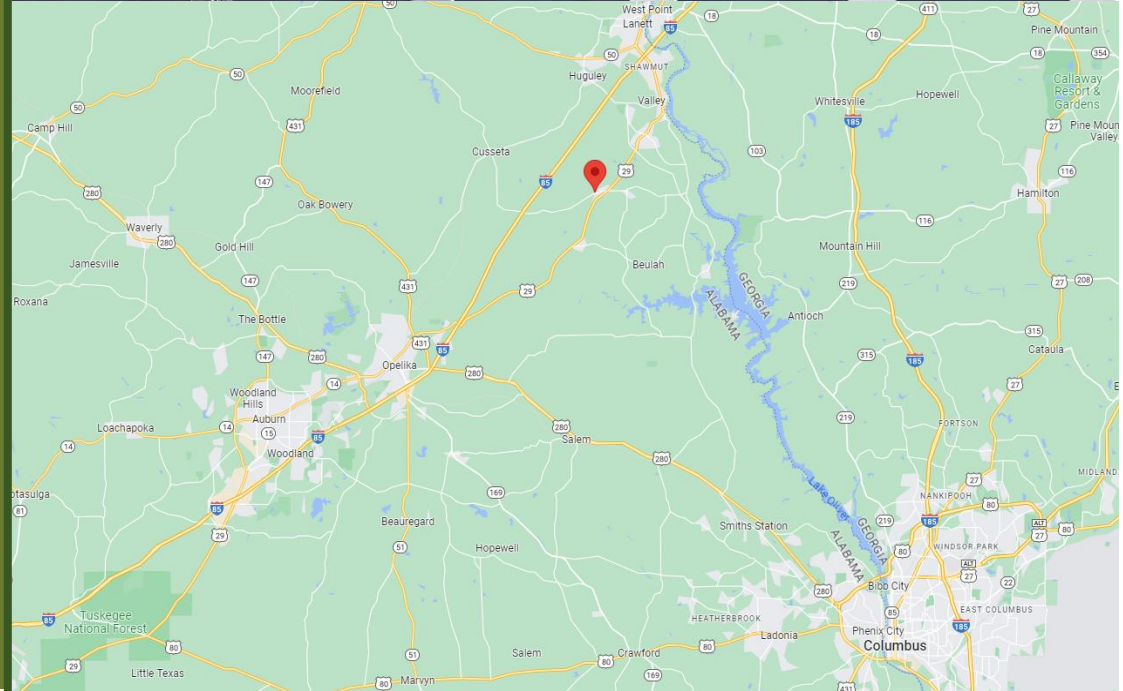
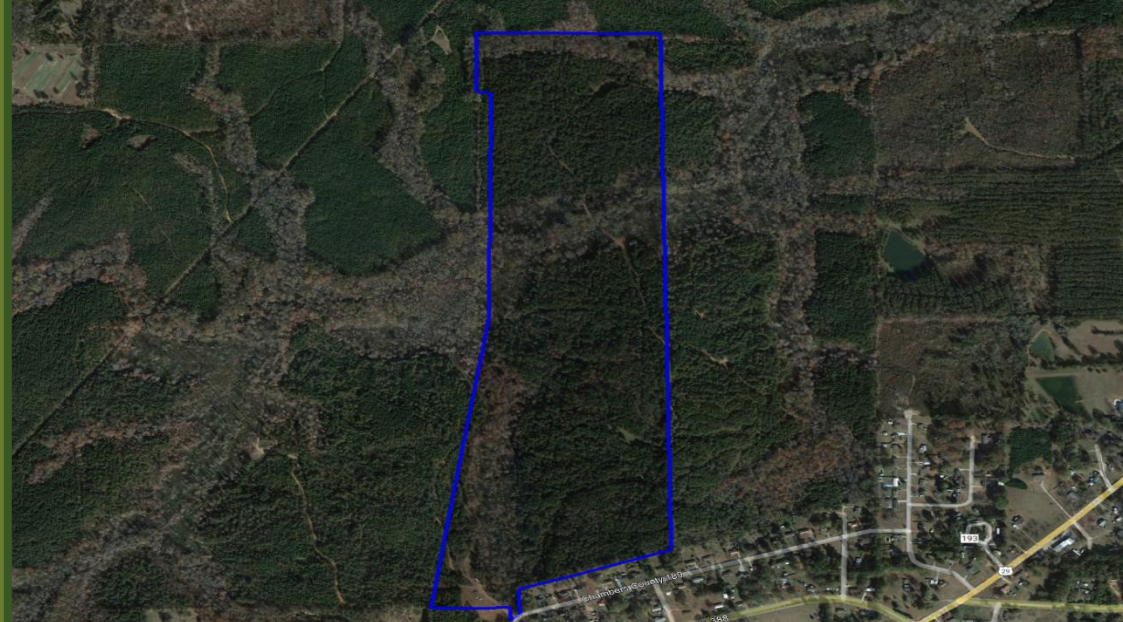
Location

Chambers Valley is located approximately 15 miles northeast of Auburn, Alabama and 22 miles northwest of Columbus, Georgia.

Geology

Local Geology Mapping indicates the site is underlain primarily by the Opelika Complex which is made up of biotite gneiss, kyanite-sillimanite-muscovite schist and some granitic plutons. The field work identified mostly light to dark gray, white, black major mineralogy of quartz, plagioclase, alkali feldspar, biotite, muscovite, garnet and sericite gneissic texture.

The rock is predominately a dark gray to black biotite gneiss. The gneiss is hard, with a RQD of 78-100%. The minable unit displayed slight fracturing with no to slight weathering.



Field Work

In late 2022 rock-core drilling activities were performed by a professional geological and engineering firm. The drilling, logging and recovery was overseen by a Professional Geologist.

A total of five borings were performed. Holes were advanced from about 104 feet to 372.5 feet.

Multiple cores were recovered and tested as composites for Absorption, Sodium and Magnesium Soundness, LA Abrasion, Bulk Specific Gravity as well as various other tests.

The tests performed proved the rock to meet both Alabama and Georgia Department of Transport specifications.

Engineering

Mineral Resource and Reserve estimates were performed in conjunction to a mine plan.

Approximate Overburden: 2.3M tons
Measured Resource: 45.09M tons.
Mineable Reserve: 24.06M tons

Additional Investigation will be required if a mining operation were to progress on the site, however the Geology and Engineering report provides a sufficient baseline to progress with contemplated mining operations.

Market

The Market is currently showing a need for further aggregate with a yearly deficit of approximately 2.9M tons.

This location would service both Alabama and Georgia equally with a calculated retail price of \$18.87/ton

Based on the market factors gathered by the specialist mining consultants, the estimated Net Present Value of this site is:

\$62,535,686

